



Middleforth Church of England Primary School

Friday 11th November Newsletter

Dear Parents/Carers,

Thank you all again for your support this week with parents evening, it was incredibly well attended and a huge success. We have created a short survey, which we would be grateful if you could take the time to complete. Please click the link here <https://forms.office.com/r/5TLG34SdgT>.

We have also started to plan all of our Christmas events in school and the details about these are further on in the newsletter. I hope you will all join us for the many different celebrations and services.

Finally, this week I have seen so many examples of work from children who are proud of their learning. It makes my day when children come and share their work with me and my wall is slowly filling up of all the different ways our children let their light shine and it is a constant reminder of how lucky I am to be the headteacher at Middleforth.



Stars of the Week

Nursery - Oliver

Rec - Robyn & Lana

Y1 - Paige & Amelija

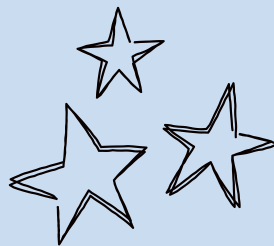
Y2 - Charlie & Emma

Y3 - Thomas & Harriet

Y4 - Jody-Rose & David

Y5 - Riley & Ethan

Y6 - Olive & Natasha



Target 96%

Reception	98.3%
Year 1	94.7%
Year 2	93.8%
Year 3	94.0%
Year 4	91.0%
Year 5	99.1%
Year 6	99.7%
Total	95.7%

Collective Worship - Our half term value is Trust

On Monday this week we talked about knowing Jesus is with us in stormy times and having faith and trusting in God. We acknowledged that sometimes it is difficult to trust when we are worried or frightened but we shared ideas of what we can do to help us when we feel like this.



Values at home - Fascinating Facts

The Royal National Lifeboat Institute (RNLI)

When the crew and passengers of boats get into difficulty at sea, they can trust the lifeboat crews from RNLI to try their very best to rescue them. Many of the crew and coastguards are volunteers.

- There are over 230 lifeboat stations all around the coast of Britain & Ireland
- Crews are on call 24 hours a day, every day of the year. They must be ready to drop what they are doing at a moments notice



LET YOUR LIGHT SHINE - MATTHEW 5:16

TAKEHOME



In the news this week



Pupils in schools should not be unfairly singled out for having afro hair, the Equality and Human Rights Commission (EHRC) has said in new guidelines for schools. The EHRC reported that rules banning certain styles are likely to be breaking the law. This includes styles such as afros, braids, cornrows, plaits, locks, and head coverings. The new guidance was announced to help schools in England, Scotland and Wales ensure their hair policies are fair.

Things to talk about at home ...

- > Have you, or do you know anyone who has, had to change your/their appearance for work or for school?
- > Share your thoughts on the new changes, do you think it's important these guidelines are given to workplaces and schools?

Please note any interesting thoughts or comments

Share your thoughts and read the opinions of others

www.picture-news.co.uk/discuss



© Picture News 2022

Key Dates



Wednesday 7th December - Whole school Yogi Mental Health Day

Thursday 15th December - Final Celebration Assembly

Friday 16th December - Whole School Church and Crib Service. School Closes at 2.00pm.

***Please read further on for Christmas dates.**

Subject Focus - Music

In Year 4 children have begun to look at the history of rock and roll music. We have listened to music by Elvis Presley, learnt how to do the hand jive and started to sing 'Rock around the Clock.'

Year 2 are focusing on orchestral instruments and are learning the names of them and beginning to recognise them by the sounds they make.



Remembrance Prayer

A prayer for World peace

O God of the nations,

as we look to that day when you will gather people

from north and south, east and west,

into the unity of your peaceable Kingdom,

guide with your just and gentle wisdom all who take counsel

for the nations of the world,

that all your people may spend their days in security, freedom, and peace,

through Jesus Christ, our Lord. Amen



LET YOUR LIGHT SHINE - MATTHEW 5:16

New Ways November 2022

MONDAY

TUESDAY

WEDNESDAY

THURSDAY

FRIDAY

SATURDAY

SUNDAY



1 Make a list of new things you want to do this month

2 Respond to a difficult situation in a different way

3 Get outside and observe the changes in nature around you

4 Sign up to join a new course, activity or online community

5 Change your normal routine today and notice how you feel

6 Try out a new way of being physically active

7 Be creative. Cook, draw, write, paint, make or inspire

8 Plan a new activity or idea you want to try out this week

9 When you feel you can't do something, add the word "yet"

10 Be curious. Learn about a new topic or an inspiring idea

11 Choose a different route and see what you notice on the way

12 Find out something new about someone you care about

13 Do something playful outdoors - walk, run, explore, relax

14 Find a new way to help or support a cause you care about

15 Build on new ideas by thinking "Yes, and what if..."

16 Look at life through someone else's eyes and see their perspective

17 Try a new way to practice self-care and be kind to yourself

18 Connect with someone from a different generation

19 Broaden your perspective: read a different paper, magazine or site

20 Make a meal using a recipe or ingredient you've not tried before

21 Learn a new skill from a friend or share one of yours with them

22 Find a new way to tell someone you appreciate them

23 Set aside a regular time to pursue an activity you love

24 Share with a friend something helpful you learned recently

25 Use one of your strengths in a new or creative way

26 Try out a different radio station or new TV show

27 Join a friend doing their hobby and find out why they love it

28 Discover your artistic side. Design a friendly greeting card

29 Enjoy new music today. Play, sing, dance or listen

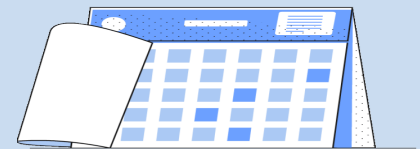
30 Look for new reasons to be hopeful, even in tough times



ACTION FOR HAPPINESS

Happier · Kinder · Together

School term and holiday patterns 2022/2023



Autumn Term 2022

School closes on
Mid-term closure
School re-opens on
School closes on

Friday 21st October 2022
Monday 24th October - Friday 28 October 2022
Monday 31st October 2022
Friday 16th December 2022

Spring Term 2023

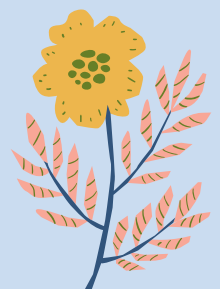
Re-open on
School closes on
Mid-term closure
School re-opens on
School closes on

Tuesday 3rd January 2023
Friday 10th February 2023
Monday 13th February - Friday 17th February 2023
Monday 20th February 2023
Friday 31st March 2023

Summer Term 2023

Starts
May Day
School closes on
Mid-term closure
School re-opens on
School closes on

Monday 17th April 2023
Monday 1st May 2023
Friday 26th May 2023
Monday 29th May - Wednesday 7th June 2023
Thursday 8th June 2023
Friday 21st July 2023



LET YOUR LIGHT SHINE - MATTHEW 5:16



Christmas & Advent

Important Dates 2022



Date	Event	Time
Friday 18 th November	Non-Uniform Day, 'Children in Need', Voluntary Donations please	All Day
Friday 25 th November	Non-Uniform Day, Donations for Christmas Raffle please, (see separate poster attached)	All Day
Monday 5 th December	EYFS Dress Rehearsal	1.30pm
Tuesday 6 th December	KS1 Dress Rehearsal	1.30pm
Monday 12 th December	KS2 Dress Rehearsal	1.30pm
Thursday 8 th December	KS1 Performances 'Are We Nearly There Yet?'	1.30pm 3.30pm
Friday 9 th December	EYFS Performances 'Everyone Loves A Baby!'	1.30pm 3.30pm
Tuesday 13 th December	KS2 Carol Service at St Leonard's Church	2.00pm 4.00pm
Wednesday 14 th December	Christmas Lunch & Christmas Jumpers/Accessories	All Day
Thursday 15 th December	Whole School Christmas Parties & Santa's Grotto	All Day
	Whole School Celebration Assembly & Raffle Draw	9.00am
Friday 16 th December	Whole School Christmas Worship St Leonard's Church, Parents/Carers invited to attend	9.00am
	School Closes until Tuesday 3 rd January 2023	2.00pm



LET YOUR LIGHT SHINE - MATTHEW 5:16

Non-Uniform Day

25th November 2022

For our Christmas raffle prizes this year, we will be making a hamper for each class which will be filled with goodies of the same colour. Each class has been allocated a colour and we kindly ask that on non-uniform day, children bring in a donation of that colour for their class hamper.

So for example, if your class colour is red, you could bring in a packet of Maltesers or a bottle of red soap perhaps...anything that is red or has a red packet.

We will sell raffle tickets to each class and then announce the winners in assembly on 15th December 2022.

Thank you for your continued support

PTFA

Nursery & Reception: Red	Y4: Purple
Y1: Green	Y5: Yellow/Gold
Y2: Blue	Y6: White/Silver
Y3: Pink	

