



Middleforth Church of England Primary School

Friday 26th May Newsletter

Dear Parents/Carers,

What a busy half term! This half term we have had: Ofsted, which resulted in an amazing report showcasing all that we do for our children and families; Sport's Day; May Day; Upper KS2 visit to UCLAN; Reception visit to Mrs Dowsons Farm; Y5 leading Worship; every child receiving swimming lessons; Tots on Tyres, Bikeability and lots more!

We are looking forward to the last half term as this is always a particular busy and exciting term, especially for our Year 6 pupils.

On behalf of myself and the staff, we would like to thank everyone for their continued support and hope you have a peaceful half term and enjoy the sunshine . We look forward to seeing you back in school on Thursday 8th June. 😊

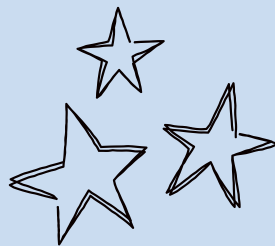
Thank you

Mrs Rushton

★ **Stars of the Week** ★

Nursery - Alfie J
Rec - Whole Class
Y1 - Sam & Olivia H
Y2 - Yash & Lois
Y3 - Ethan H & Jimmy
Y4 - Jessica & Oliver
Y5 - Emanuil & Ethan
Y6 - Melinda & Helena

WELL DONE



Target 96%	
Reception	94.0%
Year 1	96.0%
Year 2	97.2%
Year 3	91.6%
Year 4	98.6%
Year 5	95%
Year 6	93.7%
Total	95.1%

Collective Worship

As our value this half term is: Service

This week we were talking about 'Living For Others' and what this means to us. We set ourselves the challenge of helping our friends and family at home without expecting anything in return. Please can you continue to help and serve others during the half term.

Extra Challenge - Look at people within the community who serve – what do they do, how do they make a difference? E.g. optician, politician, refuse collector, midwife, dentist, mechanic, vicar, translator, street cleaner etc.



Ofsted

Some of the Schools Favourite Sections:

Pupils, including children in the early years, come through the school gates with real enthusiasm in the morning. They are eager and ready to start their day at school. They feel part of a welcoming and happy community. Warm relationships between pupils and staff are evident across the school.

Pupils respond well to the high expectations that leaders have for their learning. This means that pupils, including those with special educational needs and/or disabilities (SEND), achieve well in many subjects across the curriculum. Staff have high expectations of pupils' behaviour. Pupils treat each other and staff with respect. Pupils behave well and lessons are rarely disturbed. This allows pupils to work without interruption.

Staff morale is high. Staff are proud to work at the school. They value the time and support that leaders give them, so that they can effectively carry out their roles. Leaders, including the governing body, have a clear vision of improvement for the school. Governors both support and challenge the work of leaders to ensure that pupils are happy, safe and achieve well.

Key Dates

8th June - Return to school

26th June: Y3,4, 5 School trip

10th July: Y6 Robinwood

Special Thanks

A Huge well done to all the children who have worked extremely hard over the last term in the writing club led by Miss Lowe. Well done to the children who have passed level 1 and/or 2 Bike proficiency.

Thank you to our PTFA members and volunteers who have supported the school in several events over this half term. Congratulations to our Year 2 class who won the OPAL competition- I hope you enjoyed your treat.

SPORT'S DAY

Sport's Day was fantastic - it ran like clockwork and ALL the children loved the event.

A particular thanks to Miss Stritch and Mr Noblet for leading Sports Day and to all the staff for making the event such a amazing day- we hope you agree!



Meaningful May 2023

MONDAY	TUESDAY	WEDNESDAY	THURSDAY	FRIDAY	SATURDAY	SUNDAY
1 Do something kind for someone you really care about	2 Focus on what you can do rather than what you can't do	3 Take a step towards an important goal, however small	4 Send your friend a photo from a time you enjoyed together	5 Let someone know how much they mean to you and why	6 Look for people doing good and reasons to be cheerful	7 Make a list of what matters most to you and why
8 Set yourself a kindness mission to help others today	9 What values are important to you? Find ways to use them today	10 Be grateful for the little things, even in difficult times	11 Look around for things that bring you a sense of awe and wonder	12 Listen to a favourite piece of music and remember what it means to you	13 Find out about the values or traditions of another culture	14 Get outside and notice the beauty in nature
15 Do something to contribute to your local community	16 Show your gratitude to people who are helping to make things better	17 Find a way to make what you do today meaningful	18 Send a hand-written note to someone you care about	19 Reflect on what makes you feel valued and purposeful	20 Share photos of 3 things you find meaningful or memorable	21 Look up at the sky. Remember we are all part of something bigger
22 Find a way to help a project or charity you care about	23 Recall three things you've done that you are proud of	24 Make choices that have a positive impact for others today	25 Ask someone else what matters most to them and why	26 Remember an event in your life that was really meaningful	27 Focus on how your actions make a difference for others	28 Do something special and revisit it in your memory tonight
29 Today do something to care for the natural world	30 Share a quote you find inspiring to give others a boost	31 Find three reasons to be hopeful about the future				

ACTION FOR HAPPINESS

Happier · Kinder · Together



School term and holiday patterns

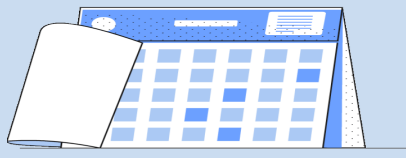
Summer Term 2023

School closes on Friday 26th May 2023

Mid-term closure Monday 29th May – Wednesday 7th June 2023

School re-opens on Thursday 8th June 2023

School closes on Friday 21st July 2023 at 2.00pm



Autumn Term 2023 Re-open Monday 4th September 2023

Mid-term closure Monday 23rd October - Tuesday 31st October 2023

School re-opens on Wednesday 1st November 2023

School closes on Friday 22nd December 2023 at 2.00pm

Spring Term 2024 Re-open on Monday 8th January 2024

Mid-term closure Monday 12th February - Friday 16th February 2024

School re-opens on Monday 19th February 2024

School closes on Thursday 28th March 2024 at 2.00pm

